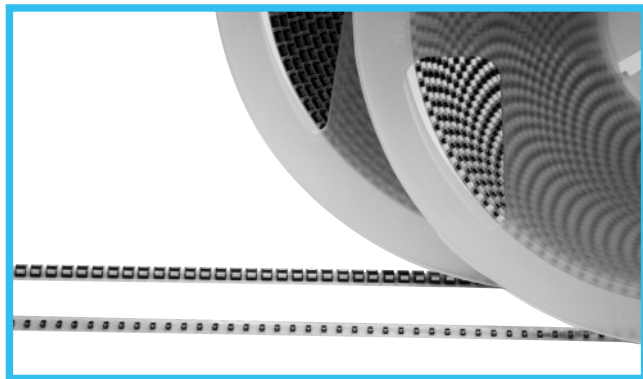
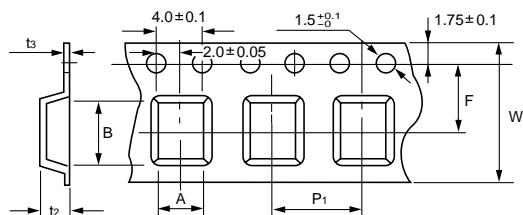


Taping Specifications for Automatic Insertion (Chip Type Capacitors)

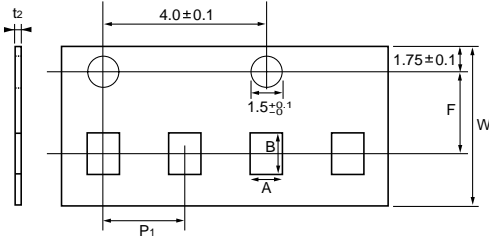


Carrier Tape Dimensions (mm)

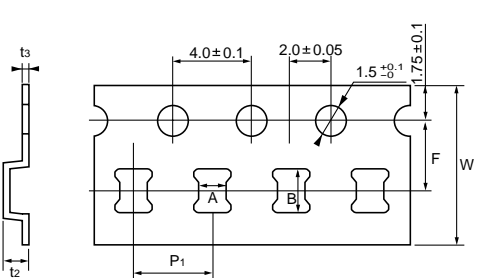
F91 • F92 • F93 • F97 • F98 M



F98U



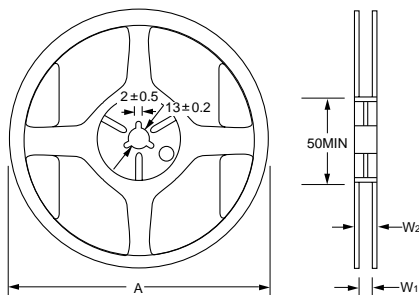
F98 S



Case code	W	A	B	F	P ₁	t ₂	t _s	
U	8.0±0.3	0.73±0.08	1.20±0.05	3.5±0.05	2.0±0.1	0.7MAX.	—	
M		0.97±0.05	1.85±0.05					
S		1.35±0.1	2.15±0.1	3.5±0.1				
P		1.55±0.1	2.3±0.1	4.0±0.1				0.2 to 0.3
A		1.9±0.1	3.5±0.1					
B	3.3±0.1	3.8±0.1	3.5±0.05					
C	3.6±0.1	6.3±0.1		5.5±0.05				
N	12.0±0.3	4.8±0.1	7.7±0.1		8.0±0.1	2.9MAX.	3.5MAX.	

Figures in () at t₂ are applicable to F92 series.

Reel Dimensions (mm)

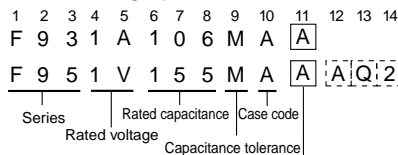


Item	Reel Diameter (mm)	
	φ180	φ330
A	φ180 ±0.3	φ330 ±2

Item	Tape width (mm)	
	8	12
W ₁	9.0 ± 0.3	13 ± 0.3
W ₂	11.4 ± 1.0	15.4 ± 1.0

Note: The above shows the dimensions of φ180 reel.
In case of φ330 reel, the appearance shape is slightly different.

Type numbering system

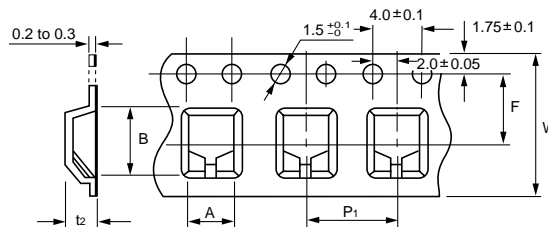


F95 series have single-side electrode structures as illustrated below, code "AQ2" is added at the end of each type number to distinguish from other case sizes.

Their electrode area at the cover tape side becomes lessened, accordingly

Tape Width (mm)	Polarity	Taping code		Applicable case size		
		Reel Dia φ180 mm	Reel Dia φ330 mm	F91 F92 • F93 F97 • F98	F95 • MUSE F95	F72 • F75
8	R (Anode is at opposite side of feeding holes.)	A	E	U • M • S P • A • B	P • Q • S A • T • B	—
12	R (Anode is at opposite side of feeding holes.)	C	G	C • N	—	U • C • D R • M

F95 • MUSE F95 • F72 • F75



Type	Case code	W	A	B	F	P ₁	t ₂	
F95 • MUSE F95	R	8.0±0.3	1.4±0.2	2.6±0.2	3.5±0.05	4.0±0.1	1.05MAX.	
	P		1.5MAX.					
	Q • S		2.0±0.2	3.6±0.2			1.5MAX.	
	A		2.1±0.2	3.7±0.2			2.0MAX.	
	T		3.0±0.2	3.6±0.2			1.5MAX.	
B	3.1±0.2	3.7±0.2	2.4MAX.					
F72	R	12.0±0.3	6.5±0.2	7.6±0.2	5.5±0.1	8.0±0.1	2.2MAX.	
	M		2.5MAX.					
F75	U	12.0±0.3	3.7±0.2	7.6±0.2	5.5±0.1	8.0±0.1	2.7MAX.	
	C		3.6MAX.					
	D		4.8±0.2				7.9±0.2	3.9MAX.
	R		6.5±0.2				7.6±0.2	4.6MAX.

Standard Packaging Quantity

Series	Case code	Q'ty (pcs./reel)	
		Reel Dia. φ180	Reel Dia. φ330
F98	U	10000	—
	M • S	4000	—
F92 F31	P	3000	8000
	A • B	2500	8000
F91	A	2000	8000
	B	2000	6000
F93 F97	C • N	500	2500
	R • P	3000	10000
F95 MUSE F95	Q • S • A • T	2500	10000
	B	2000	8500
F72	R	1000	—
	M	500	—
F75	U • C • D • R	500	—